

# CANOFIX<sup>®</sup>

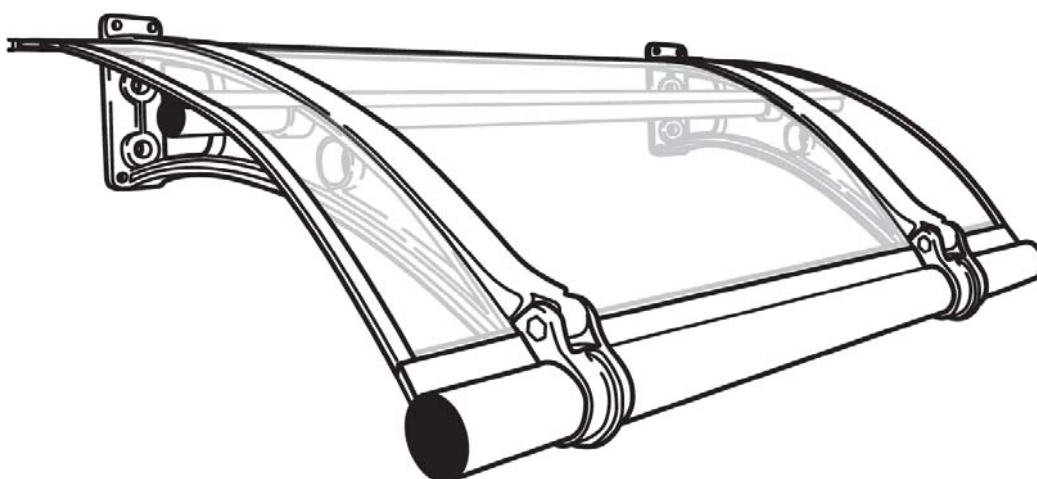
BUILD IT YOUR WAY.

---

*Eco Friendly Canopy / Awning Professional*

---

## Installation Manual

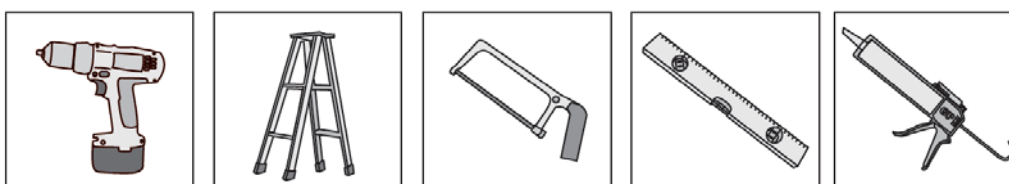


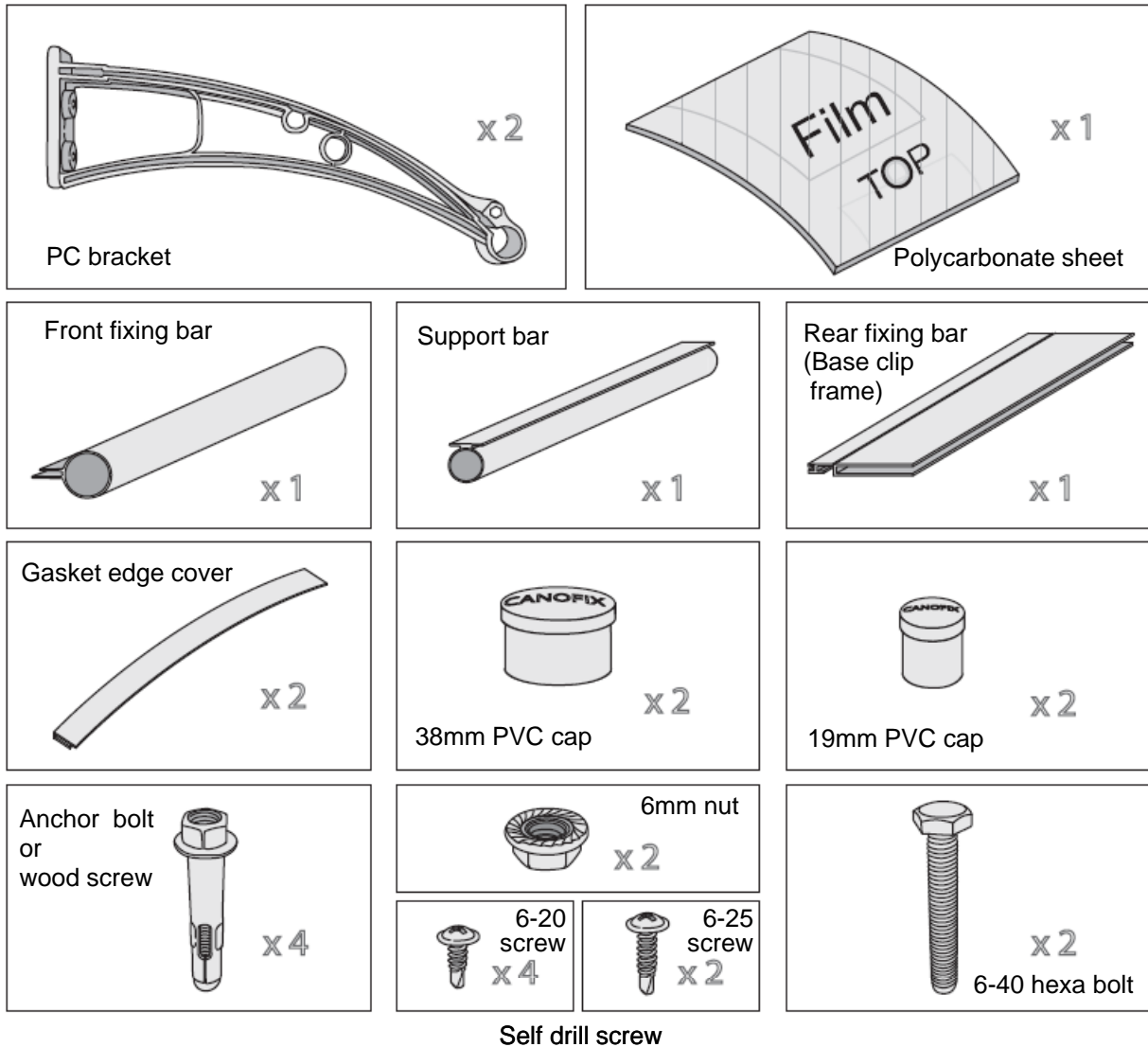
Please feel free to contact us if you have any questions regards to installation.

Canofix NZ: Call 09 476 9364 / 0800 256 221 / [info@canofix.co.nz](mailto:info@canofix.co.nz)

Distributor: CATCHERS / Call 09 444 0852 / 0800 CATCH1 / [support@catchers.co.nz](mailto:support@catchers.co.nz)

### \* Required Tools



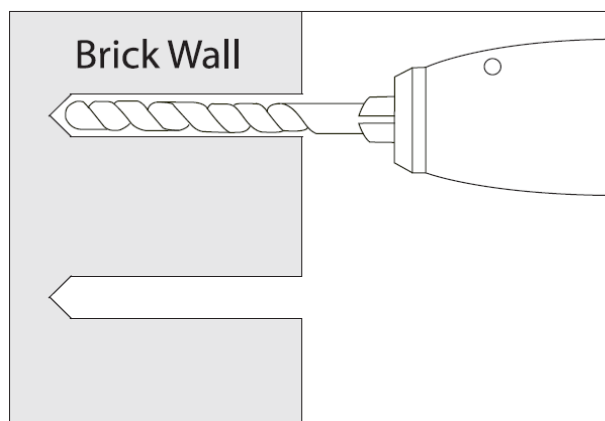


Extension socket is required for the length more than 5m.  
(OPTIONAL)

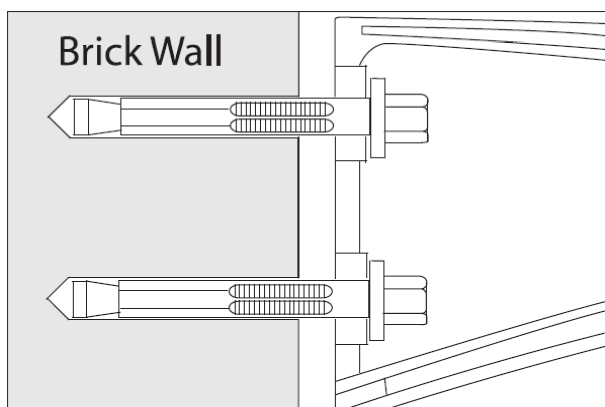


### Attention:

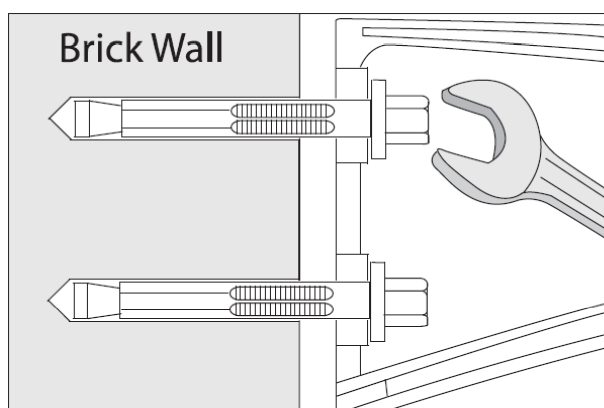
You are solely responsible for determining whether the handling, storage, assembly, installation or use of this product is safe and appropriate in any location or for any given application. Canofix NZ is not responsible for any damages or injury to you, any other person or any property resulting from the improper handling, storage, installation, assembly or use of this product, or the failure to follow Canofix NZ written instruction regarding the handling, storage, installation, assembly and use of this product. The product is intended for normal residential use only. Do not use this product for any application that is not recommended in these instructions or building codes in effect in location where this product will be used. Please always take care and use appropriate safety equipment ( including eye protection) when assembling or installation this product.



1. Use a bit whose diameter equals the anchor diameter.  
Determine proper size bit for anchor used.  
Drill hole to any depth exceeding minimum embedment. Clean hole.



2. Insert assembled anchor into hole, so that washer or head is flush with materials to be fastened. \*DO NOT unscrew the head. Insert it as is. If it is stiff, use rubber hammer to insert.



3. Expand anchor by tightening nut or head 2 to 3 turns.



**Use anchor bolt on brick wall.  
Or use wood screw to anchor on wooden wall.**

## 1. Anchor the brackets

Recommended  
80 -100mm space

Total width of Canofix

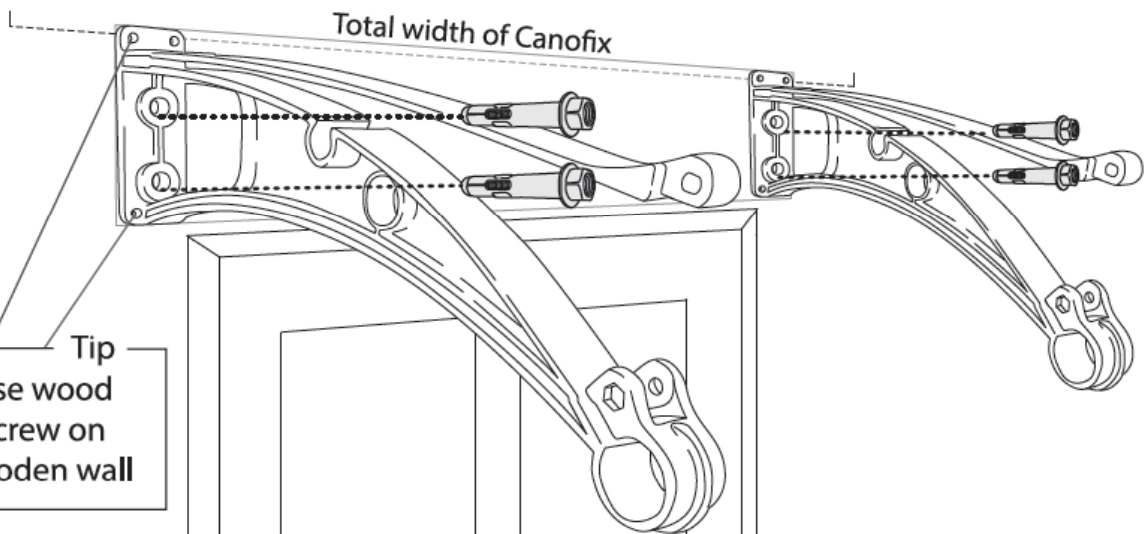
Tip  
Use leveler to  
align brackets



Follow the instruction on page 02, how to use anchor bolt

Total width of Canofix

Tip  
Use wood  
screw on  
wooden wall



Use the following



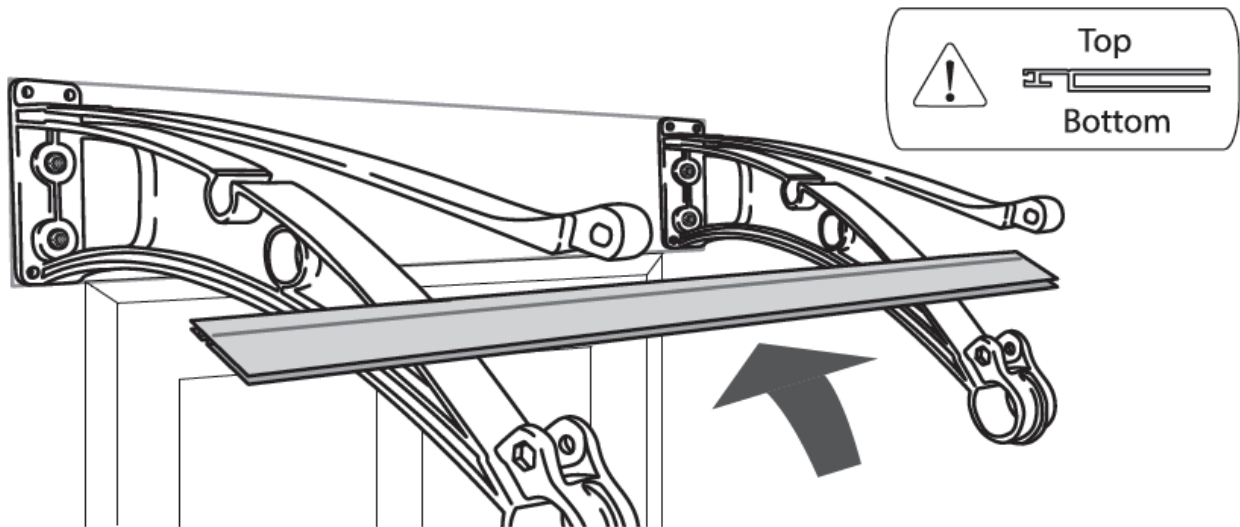
x 2



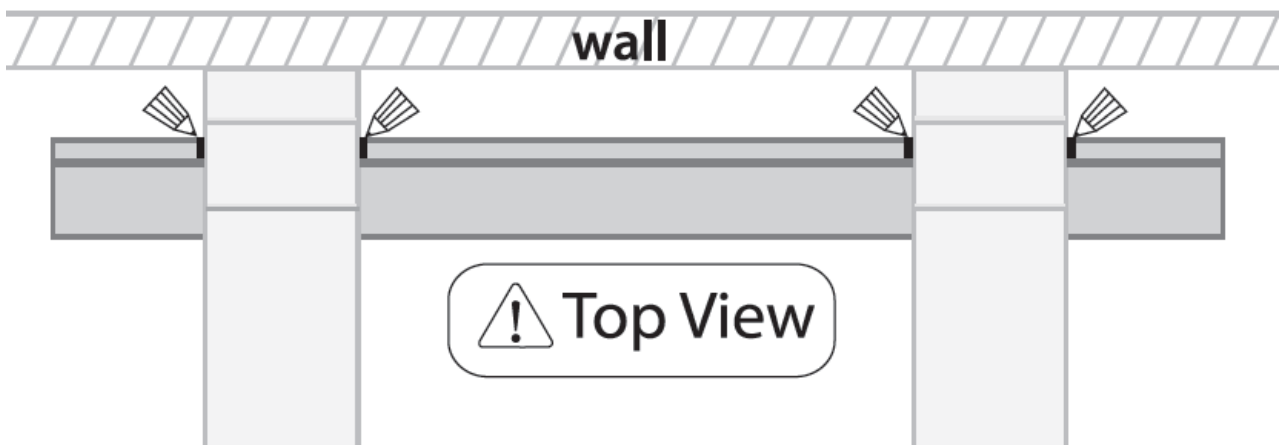
x 4

Anchor bolt or wood screw

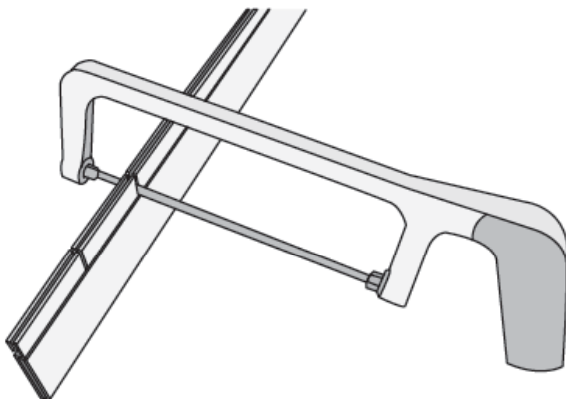
2. Insert the base clip frame fully



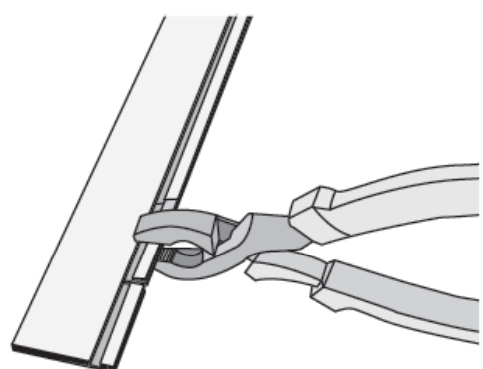
3. Mark the base clip frame to cut with pen



4. Cut the mark with saw



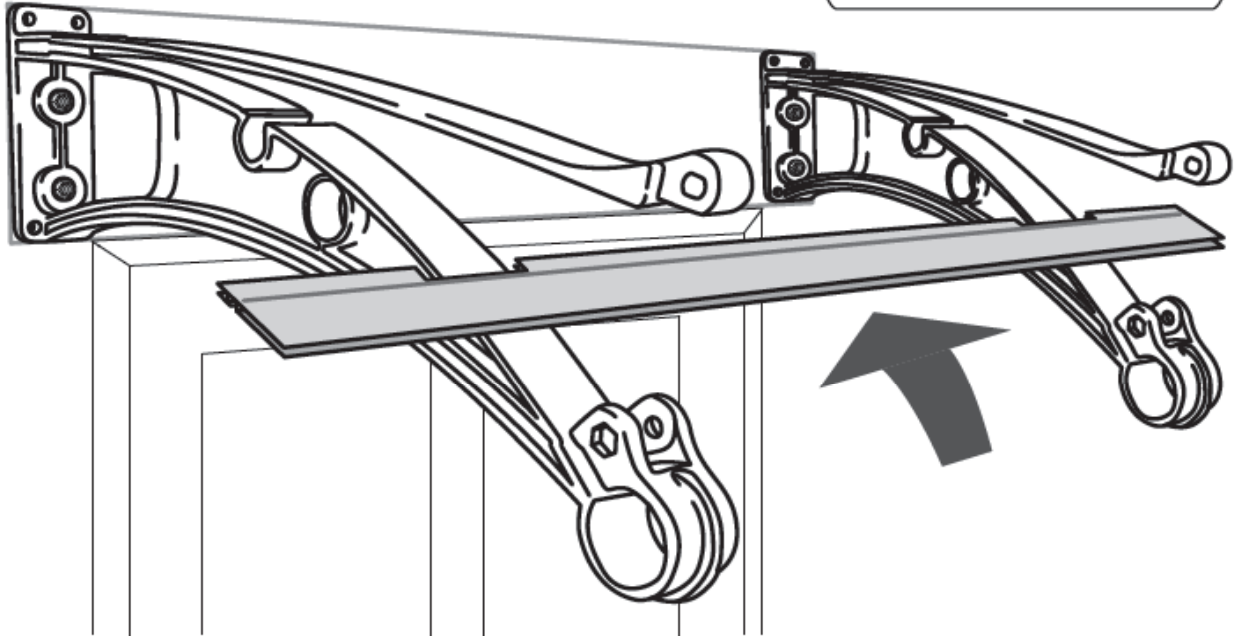
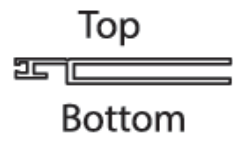
5. Break the part between mark



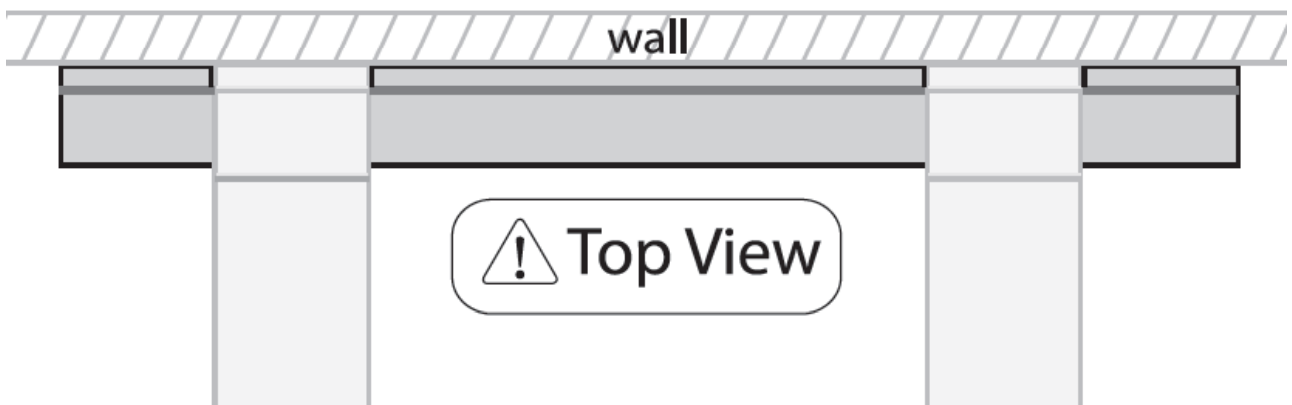
6. Insert the base clip frame fully



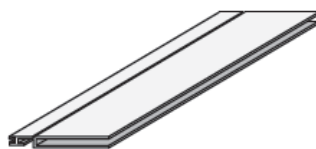
Insert fully against the wall



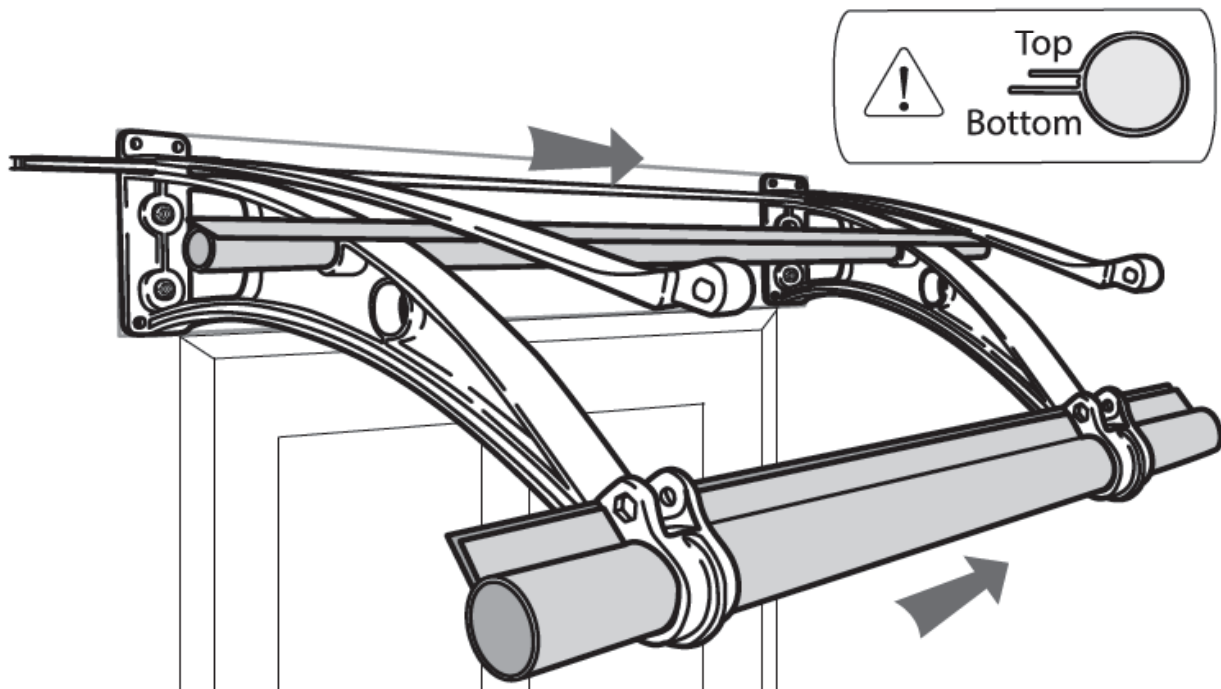
Insert fully against the wall



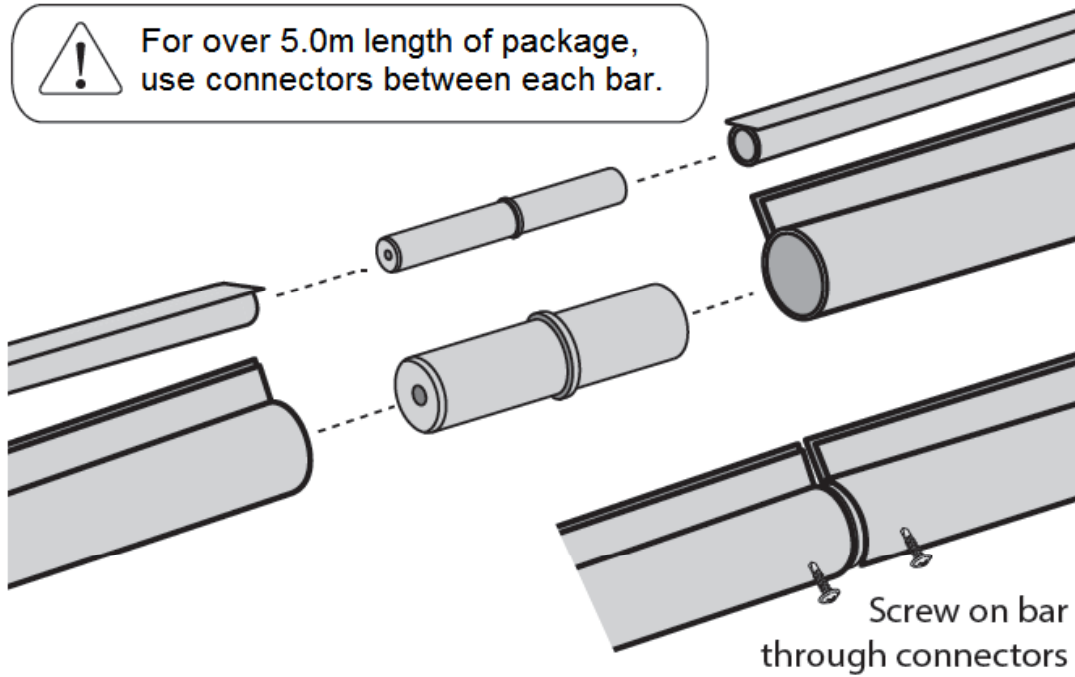
Use the following



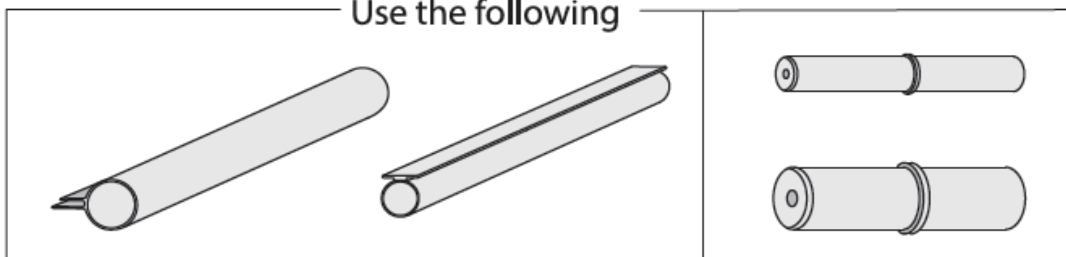
## 7. Insert two structure bars



For over 5.0m length of package,  
use connectors between each bar.



Use the following



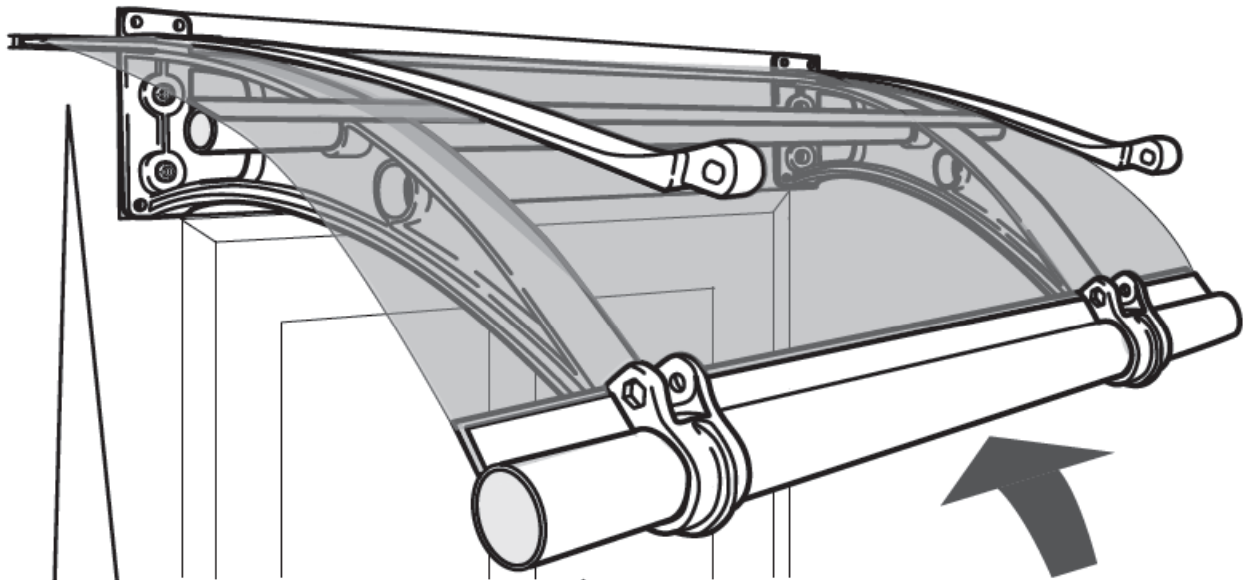


## 8. Insert the Polycarbonate sheet



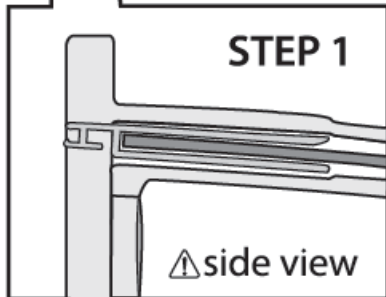
**Remove** 2 protector films on Polycarbonate panel  
BEFORE insert. Top & Bottom **BUT!!!**

**To avoid** scratches from aluminum bars,  
please remove the bottom film after installation



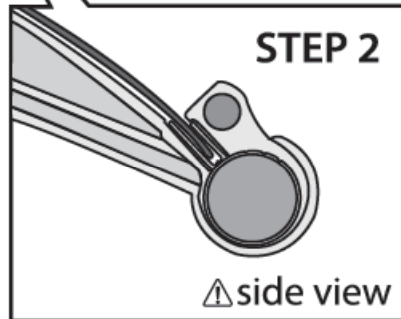
**STEP 1**

⚠ side view



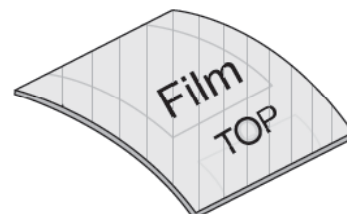
**STEP 2**

⚠ side view



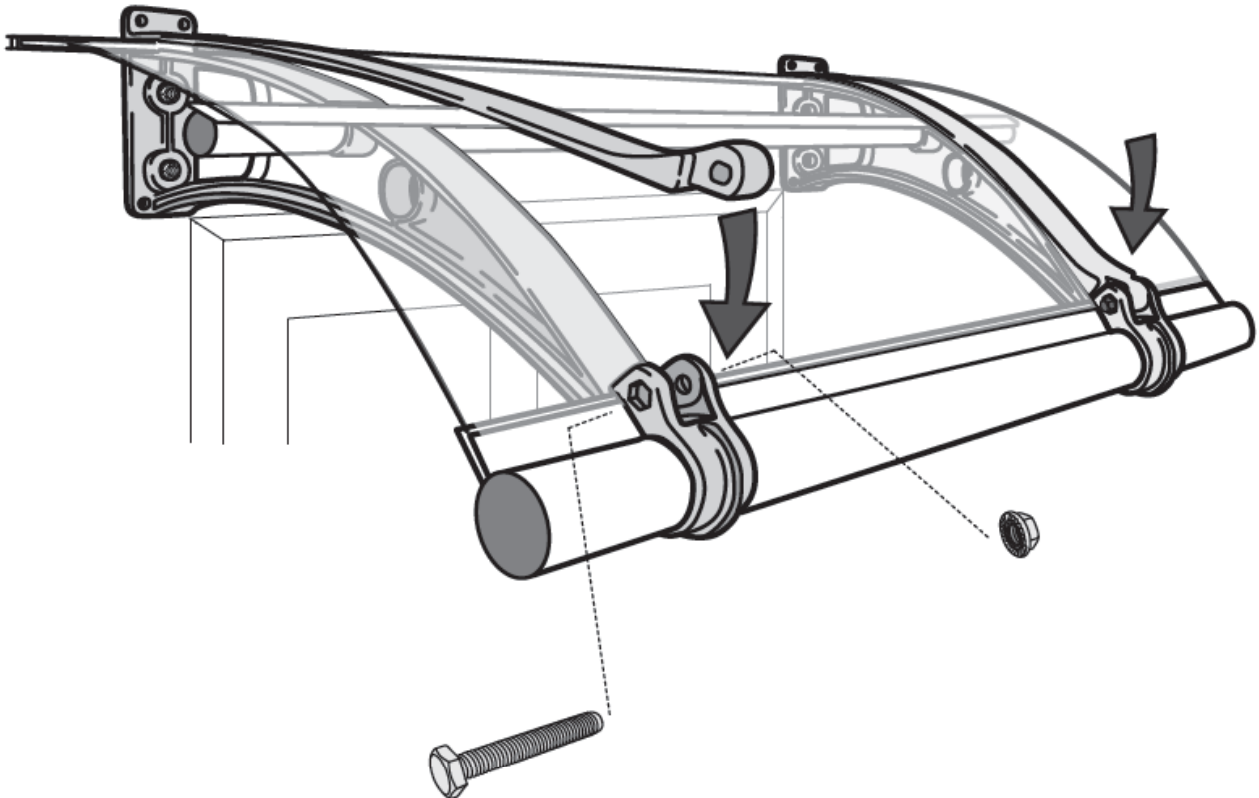
**Remove** 2 films on  
Polycarbonate panel  
Top (White film)  
Bottom (Clear film)

Use the following

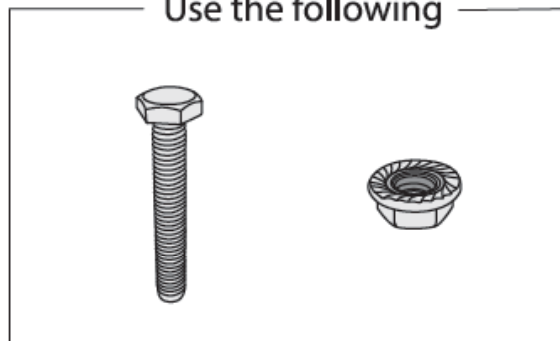




⚠ Align the Polycarbonate sheet and bars **before** bolting brackets



Use the following

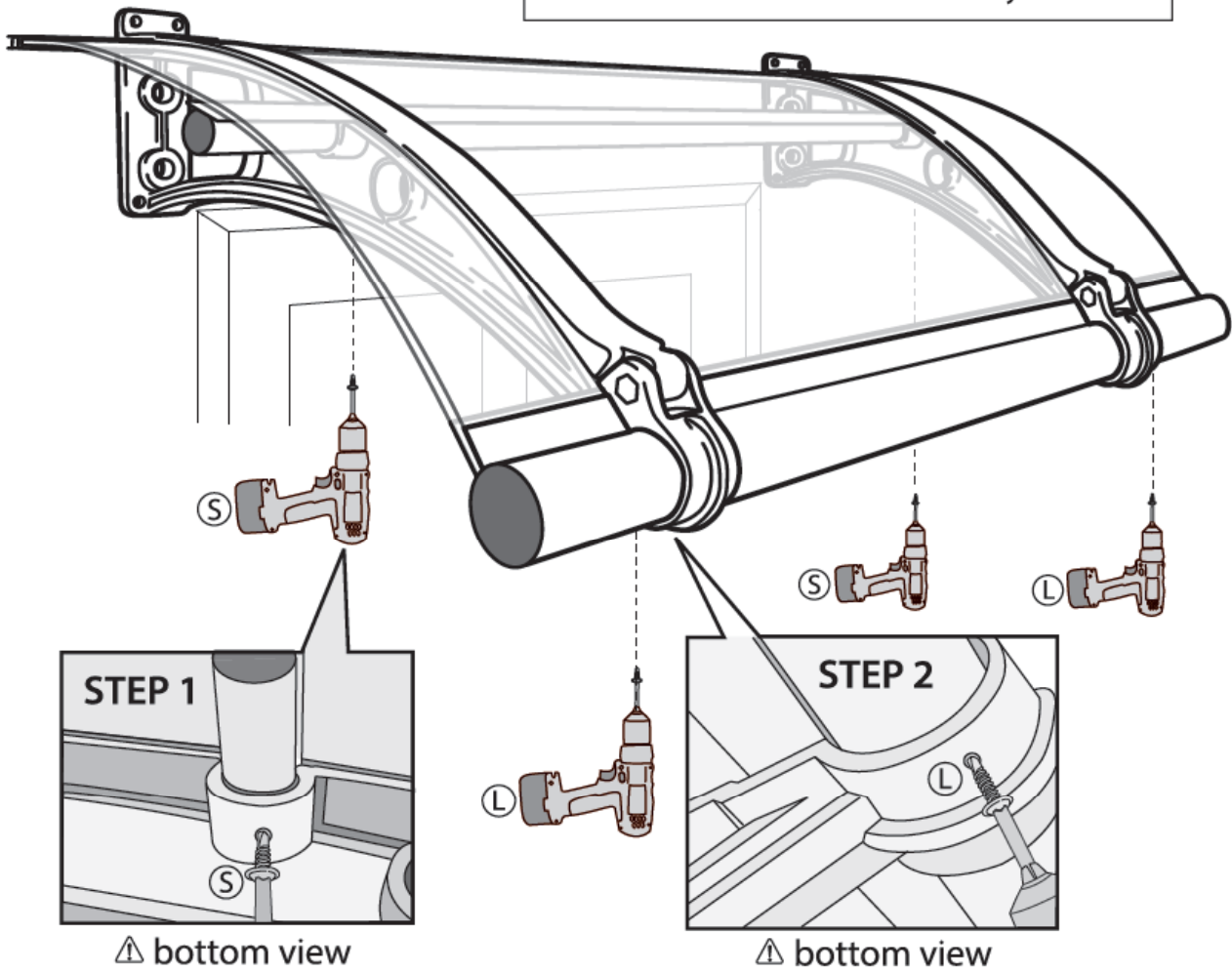


## 10. Bolt on Bracket to hold bars and Polycarbonate sheet

⚠ Align the Polycarbonate sheet and bars **before** bolting on brackets

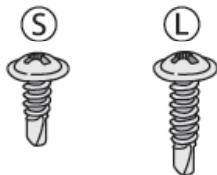
### Tip

If you find hard to screw, you can pre-drill starter hole with drill bit for easy screw

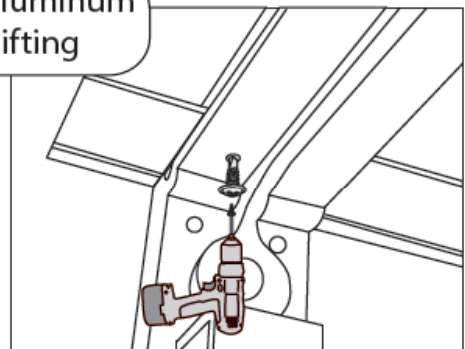


**Please screw** on one single bracket through aluminum flat bar and panel with short screw to avoid shifting

Use the following

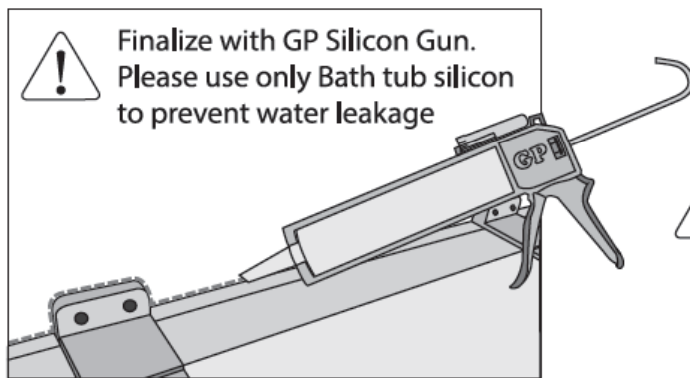
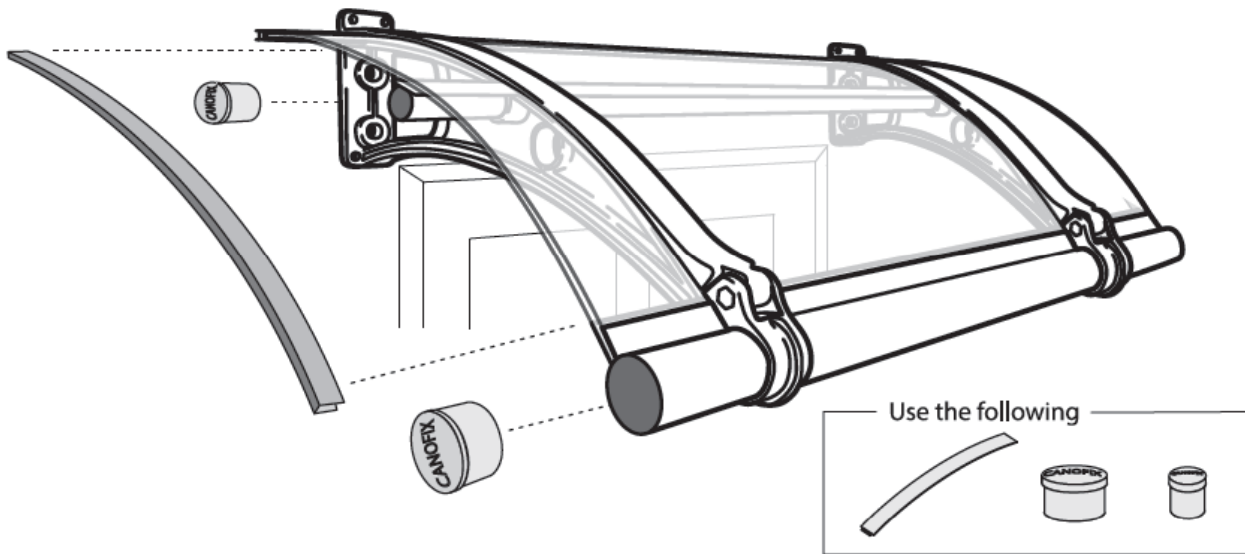


6-20 screw   6-25 screw



bottom view

## 11. Insert edge covers to complete installation



! Please use only Bath Tub Silicon.  
Harder silicon could damage  
polycarbonate

# CANOFIX®

CANOFIX New Zealand  
Address: 181 Upper Harbour Drive, Greehithe, Auckland  
Postal: PO Box 35665, Browns Bay, Auckland 0753  
Call: 09 476 9364 / 0800 256 211  
Email: [info@canofix.co.nz](mailto:info@canofix.co.nz), Web: [www.canofix.co.nz](http://www.canofix.co.nz)